



# INSPIRE

Investing in Neighborhoods and Schools to Promote  
Improvement, Revitalization, and Excellence

## Medfield Heights Elementary School

June 13, 2018



# Welcome + Agenda

*Mary Colleen Buettner, INSPIRE Planner*

*Reni Lawal, Northern District Planner*

## **INSPIRE Overview/Questions**

- What is it? How does it work? What does that mean for us?

## **Group Discussion and Mapping**

- What do you appreciate and want to enhance in your neighborhood?
- What do you think needs work in your neighborhood?

## **Next Steps**

- Neighborhood Survey
- Community Walk

# Investing in Schools + Neighborhoods



City Schools, Maryland Stadium Authority, Baltimore City, and the State are investing nearly one billion dollars to renovate or replace schools.

21<sup>st</sup> Century has 3 goals:

- Transform student opportunities and achievement
- Improve engagement and wellbeing of communities
- **Help revitalize neighborhoods and communities**

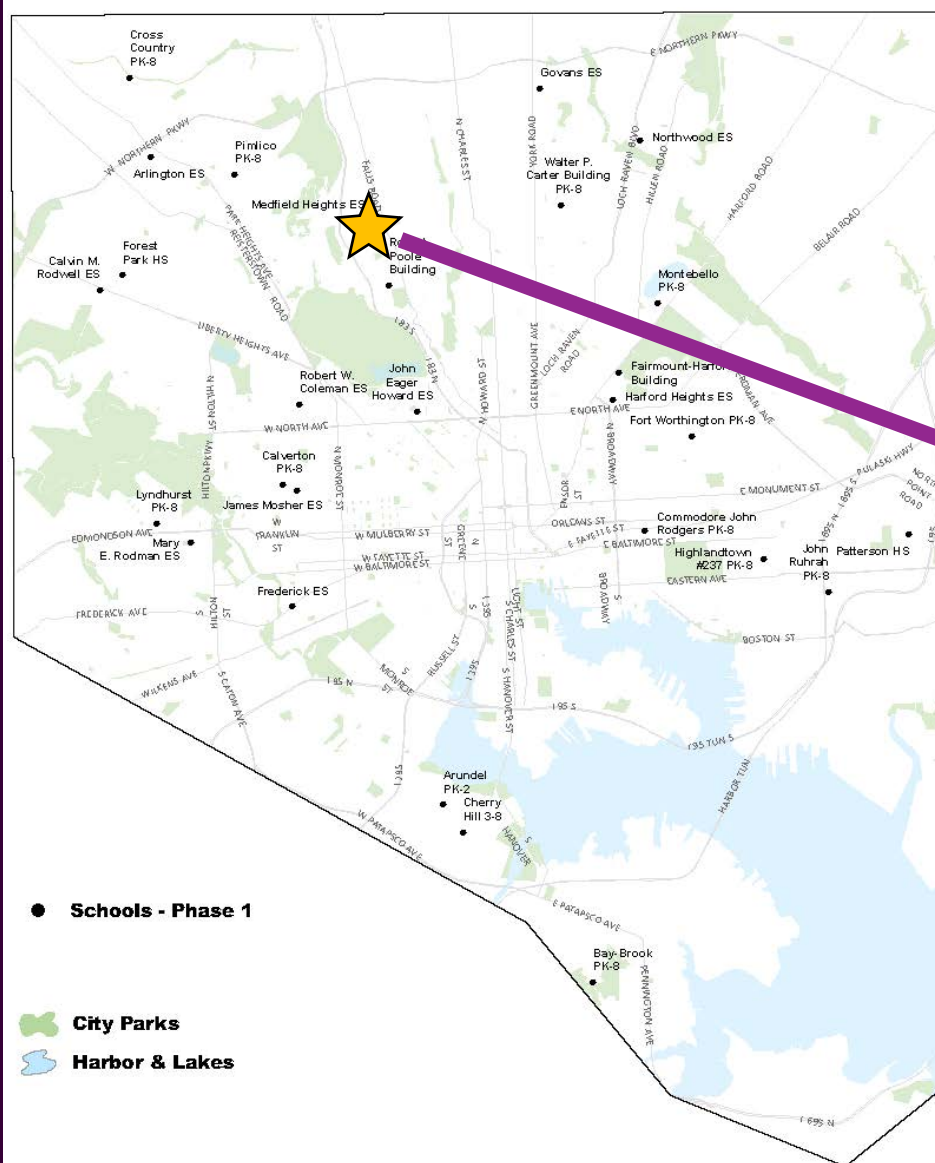


The Planning Department launched the INSPIRE program to focus on the neighborhood immediately surrounding each of the 21<sup>st</sup> Century schools.

Concentrate improvements around the school:

- Improve the environment and quality of life
- Take concrete action towards the community's long-term vision; guide private investment

# Rolling-out INSPIRE Citywide → Area Specific





# There's a Lot Being Planned/Happening...



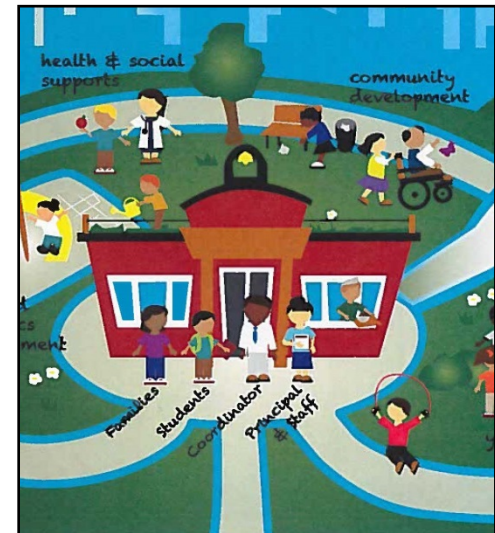
## COMMUNITY SCHOOLS



**School Site  
(City Schools)**



**Around the School  
(Dept. of Planning)**



**Partners & Resources  
(Family League)**

# 21<sup>st</sup> Century Activity Timeframe



Planning



Design



Construction



Occupancy



18-24 Months



18-24 Months



INSPIRE Process . . . . .

# INSPIRE: What It Is (Overview)

- A **plan**
  - Improve quality of life and guide community's long-term vision
  - Recommendations for short-and long-term activities and investments
  - Adopted by the Planning Commission
  - City investments
  - Community-based/public space project
- A **process** to develop and begin to implement the plan
  - Gather information
  - Draft and review recommendations
  - Write, review, and implement

# Activities, Investments, Recommendations



## **Preparing for Opening Day**

City agencies have committed to streetscape improvements (sidewalk repairs, crosswalks, street trees, etc.).

*Where: Along the Primary Walking Routes*



## **Area-Specific Recommendations**

Improvements in the environment and QOL of students, their families, and neighborhood residents/businesses (housing market and development; safety; sanitation; sustainability; health, wellness, and recreation; transportation; and self sufficiency).

*Where: Throughout INSPIRE area, nearby*



## **Community-Selected Priority Project**

INSPIRE funds implementation of one of the recommendations.

*Where: Throughout INSPIRE area*




# Recommendations: Primary Walking Routes

## Preparing for Opening Day


City agencies have committed to making these improvements:

- Repairing sidewalks
- Repainting or adding crosswalks
- Marking Safe Routes to School
- Assessing crossing guard deployment
- Pruning & planting street trees
- Replacing missing/broken lights
- Boarding open vacant buildings
- Picking up trash and maintaining vacant lots




## Frederick Elementary School *Primary Routes to School*


Over the last few months, City agencies have made improvements along the highlighted blocks so that your child's walk to school is safer and more pleasant. We encourage use of these routes to school.




- 1/4-mile INSPIRE area
- Improved Routes
- 🚶 Crossing Guards  
*Initial placements are marked on the map. DOT will assess placement in the first few weeks of school.*
- 🌳 Frederick Walking School Bus Pick-up sites.
- ~ Future sidewalk improvements



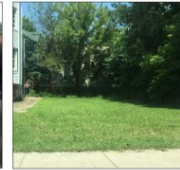
Sidewalk Repairs



Crosswalks



Street Trees:  
coming this fall



Sanitation &  
Code Enforcement

Thank you to Baltimore City agencies: DOT, BCRP/Tree Baltimore, HCD, and DPW.

# Recommendations: Quarter-Mile around the School

- **Housing & Market Strength**: *Have diversity in housing type, housing quality; remove blight; focus on retail and other development*
- **Environmental Sustainability**: *Improve the natural environment*
- **Transportation**: *Connect people to the places they need and want to go*
- **Sanitation**: *Have clean sidewalks, vacant lots, alleys, and other areas*
- **Improve Safety**: *Make people feel and be safe*
- **Health and Wellness**: *Ensure there are places for people to recreate, play, and come together; provide better access to healthy foods*

# Implementation: Examples



- Baltimore's Housing and Community Development department is rehabbing City-owned properties facing Pimlico Elementary/Middle.



- A community organization near Arlington Elementary, and faculty & students at Fort Worthington, are adopting City-owned lots and turning them into a community/school gardens.



- Frederick Elementary School and partners developed a walking school bus to safely guide children to and from school every day. Other schools are doing the same.

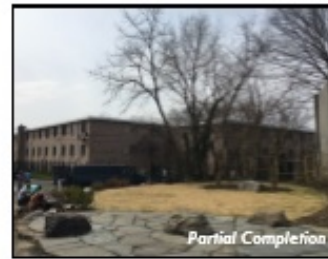


- INSPIRE and BRNI funding is implementing a new park master plan near Dorothy I. Height Elementary, which will include new lights, new playground equipment, and landscaping and beautification upgrades.

# Community-based Projects: Examples



Dorothy I. Height  
German Park Improvements



Pimlico  
Landscaped Community Space + Art



Arlington  
School/Community Garden



Forest Park + Calvin Rodwell  
Walking Path



Dorothy I. Height  
Mural/Art @ Work



Arundel + Cherry Hill  
Walking Path and Landscaping



Robert Poole Building  
Roosevelt Park Improvements



Lyndhurst  
Veteran Memorial Garden



Fort Worthington  
Community Garden



Pimlico and Arlington  
Murals/Art @ Work



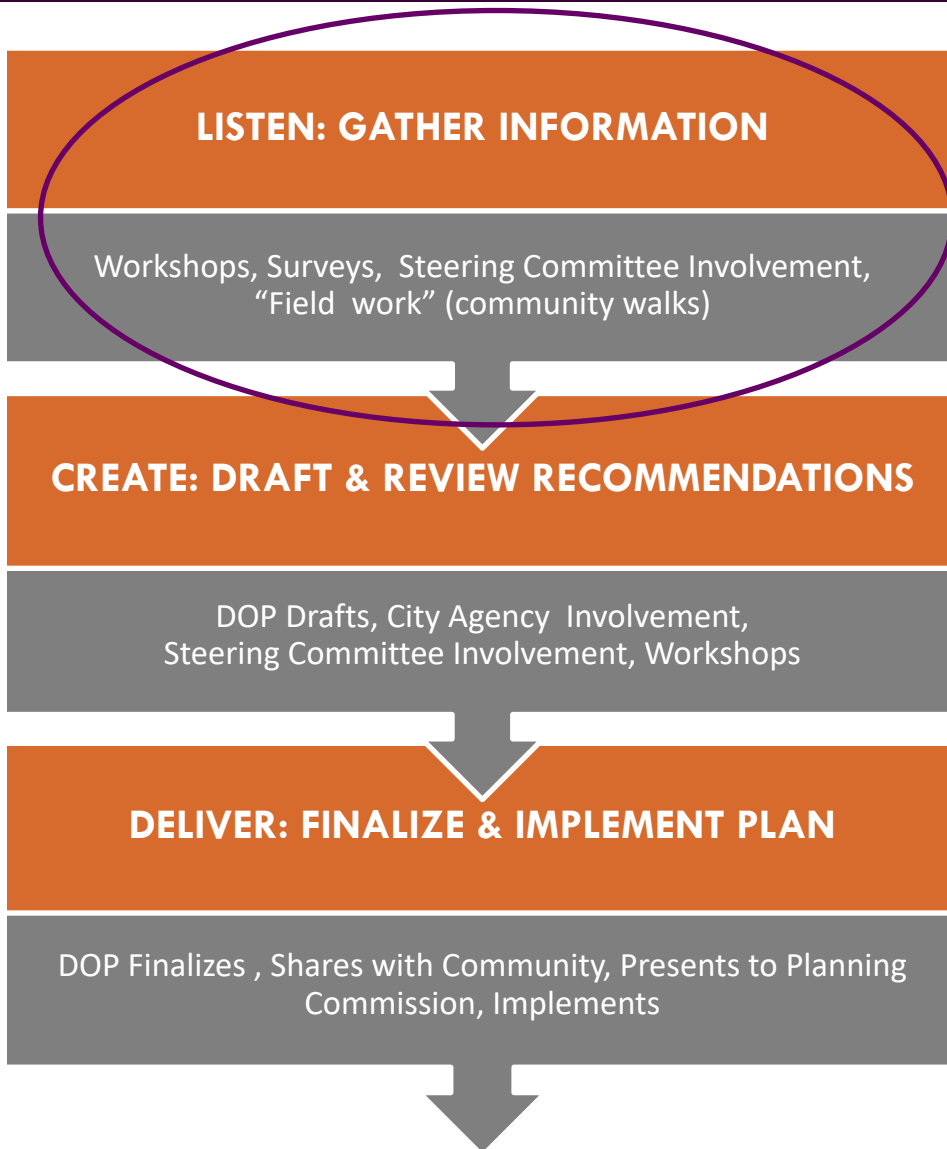
Patterson Building  
Something in Joseph Lee Park

Other projects  
to be determined





# Process = Engagement + Implementation



## COMMUNITY ENGAGEMENT

- INSPIRE Workshops
- Community Meetings & Events
- Steering Committee Meetings
- School Events
- Student Workshops & Projects
- Fieldwork/Community Walks
- Subject-area Workshops
- Project Voting
- Project Charrettes



*Although much of the plan will be implemented after adoption, there is investment and activity throughout the process.*



# INSPIRE Steering Committee

A small Steering Committee of community volunteers will work closely with INSPIRE process and serve as ambassadors.



- **Listen**

- Outreach
- Introductions
- Share important history/priorities
- Community Walks

- **Create**

- Recommendation prioritization and feedback
- ID subject-area workshop interest

- **Deliver**

- Community-based project participation
- Planning Commission participation

Sign up if you're interested in participating!

# Questions?

[mc.buettner@baltimorecity.gov](mailto:mc.buettner@baltimorecity.gov)

[Reni.lawal@baltimorecity.gov](mailto:Reni.lawal@baltimorecity.gov)

For more information on Medfield INSPIRE and to fill out the survey online please visit:



# Discussion

**WHAT DO YOU APPRECIATE AND WANT TO ENHANCE IN YOUR NEIGHBORHOOD?**

**WHAT DO YOU THINK NEEDS WORK IN YOUR NEIGHBORHOOD?**

**WHAT EVENTS, MEETINGS, OR ACTIVITIES ARE COMING UP THAT WE SHOULD KNOW ABOUT?**



# Questions and Next Steps

[mc.buettner@baltimorecity.gov](mailto:mc.buettner@baltimorecity.gov)

[Reni.lawal@baltimorecity.gov](mailto:Reni.lawal@baltimorecity.gov)

For more information on Medfield INSPIRE and to fill out the survey online please visit:  
<https://planning.baltimorecity.gov/medfield-heights-es>

Walking Tour

Upcoming Meetings

